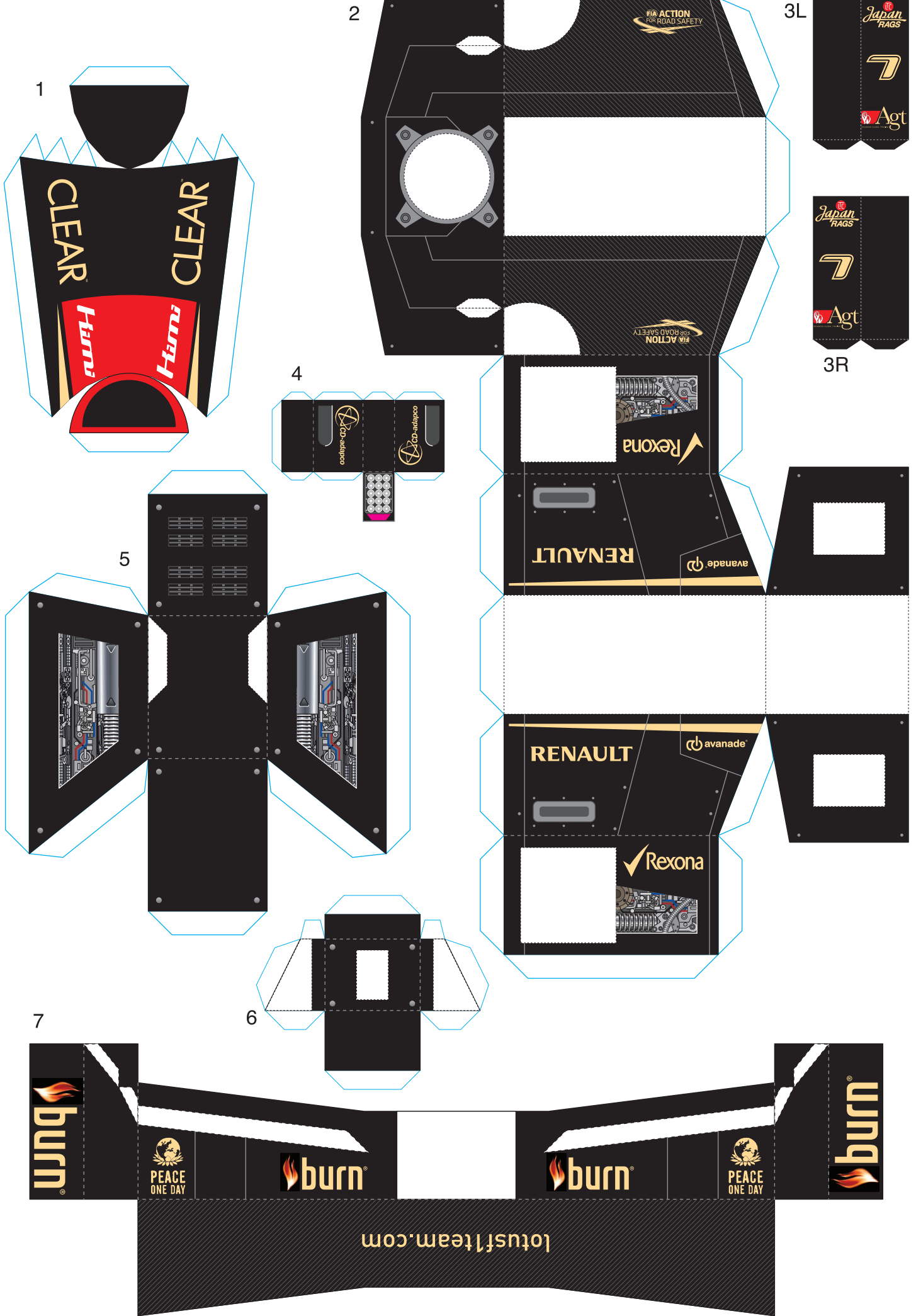
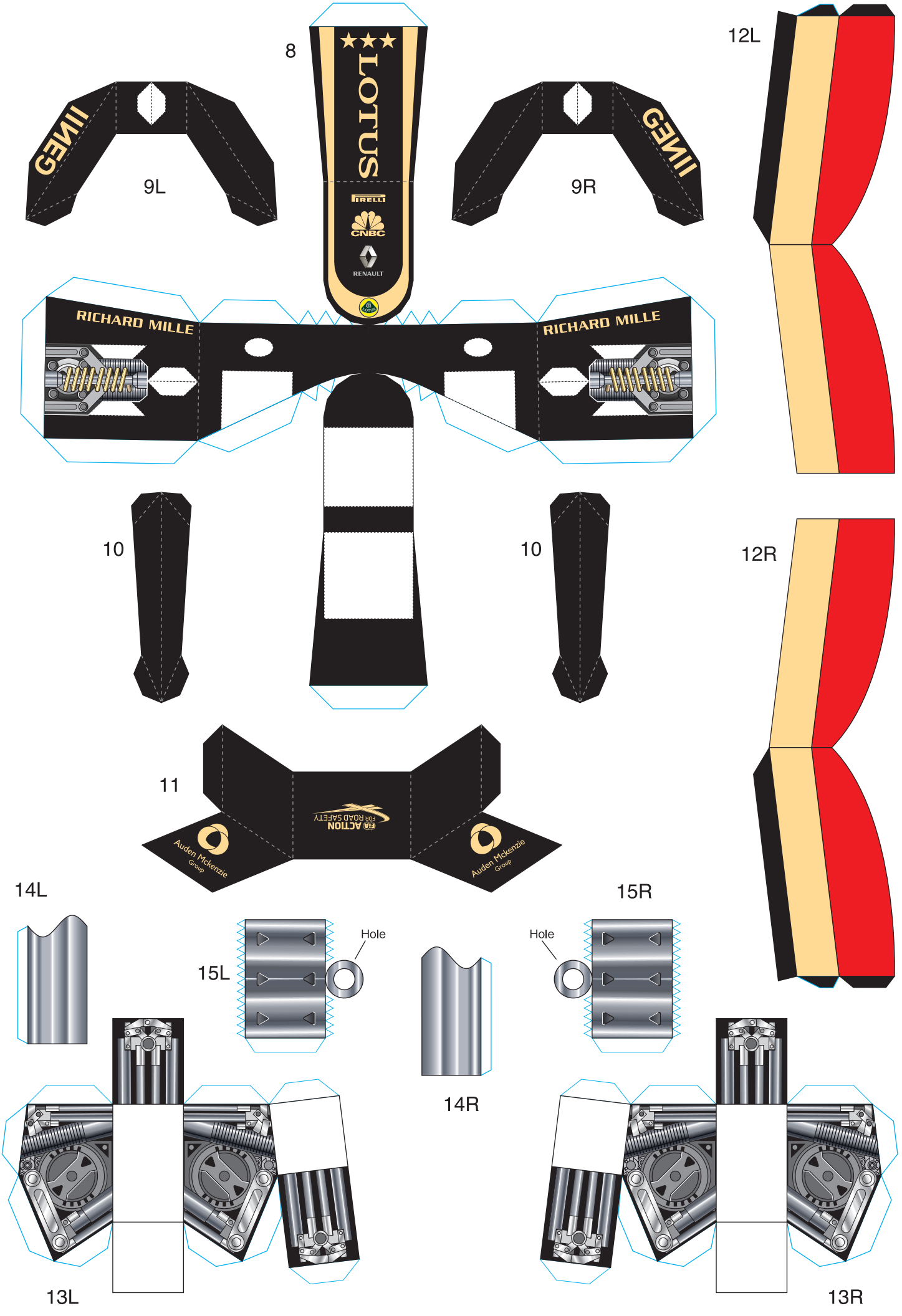


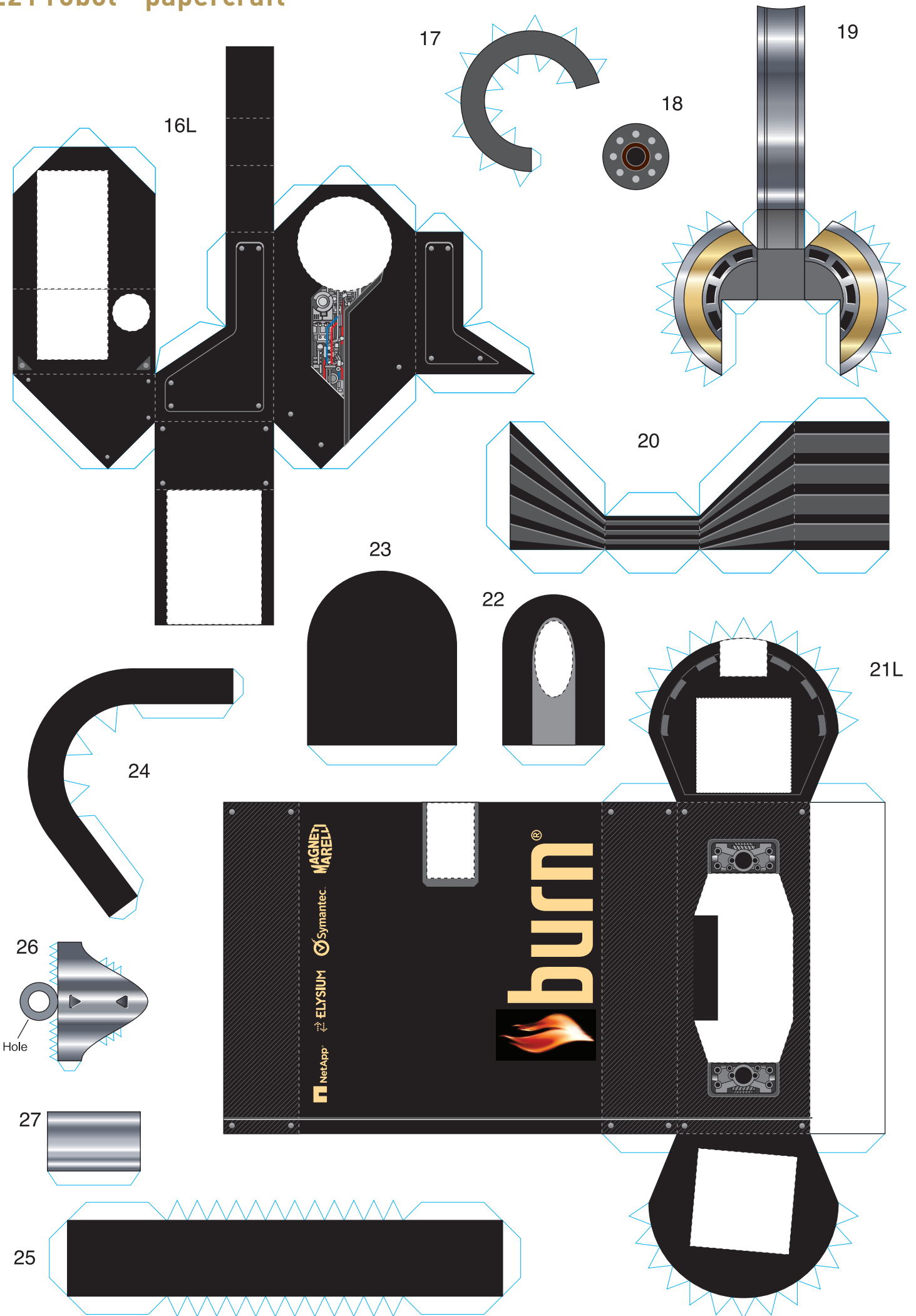
E21 robot - papercraft



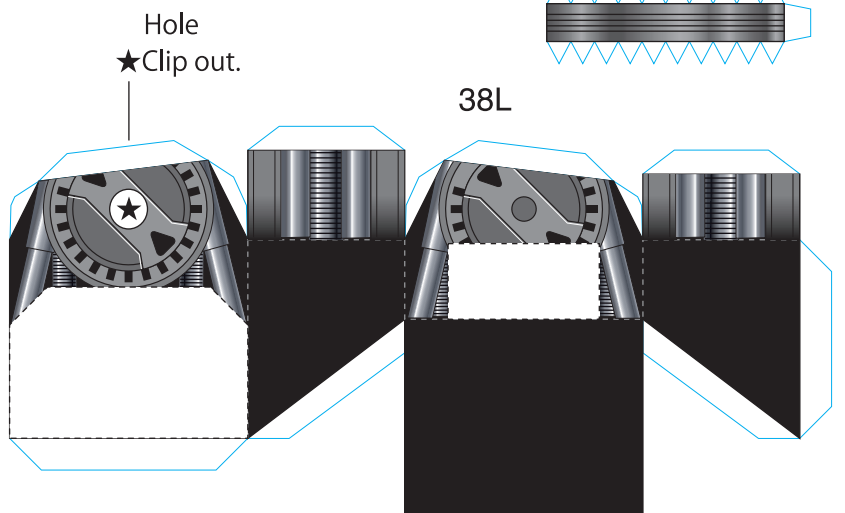
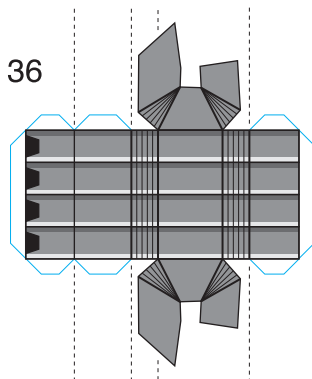
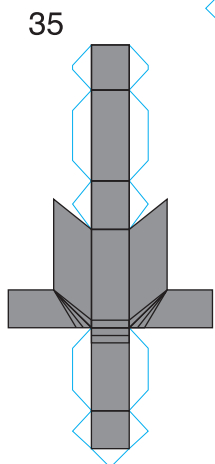
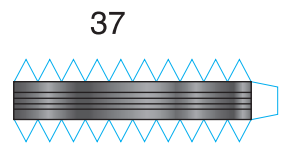
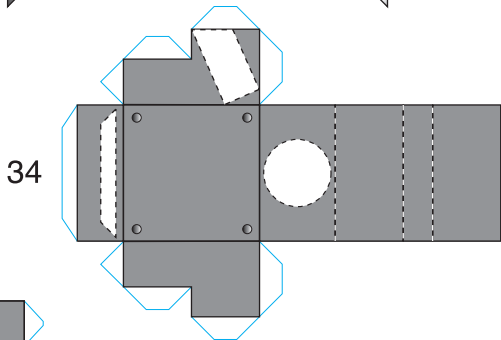
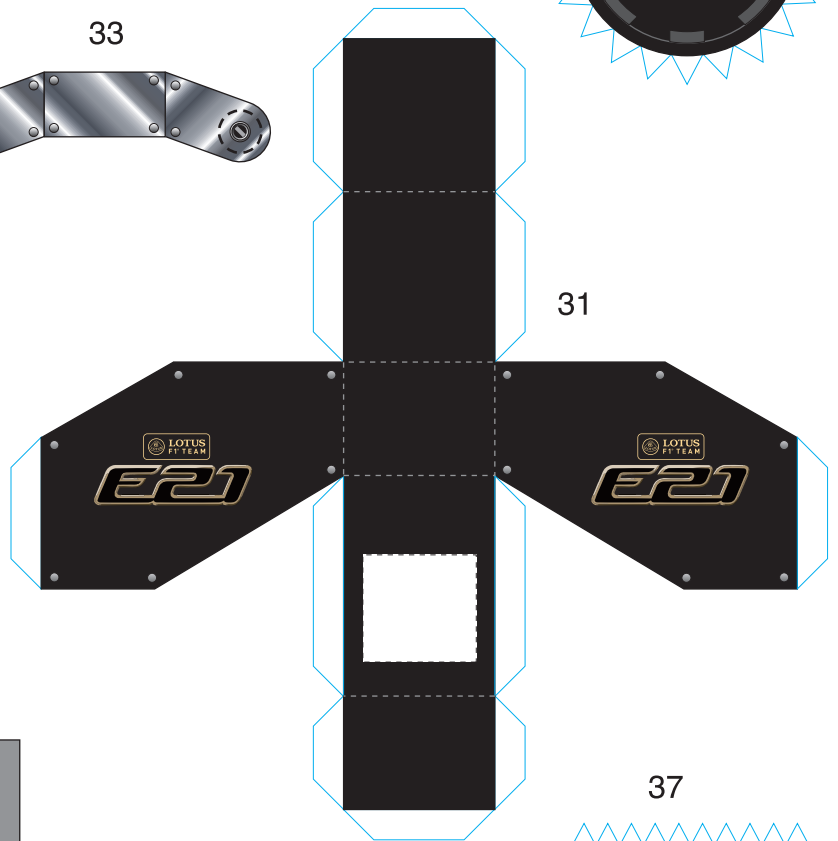
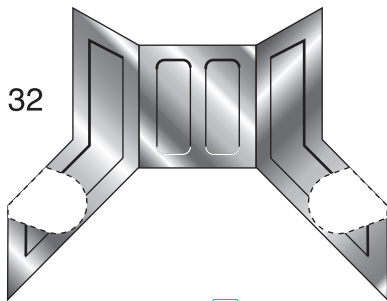
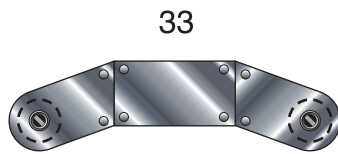
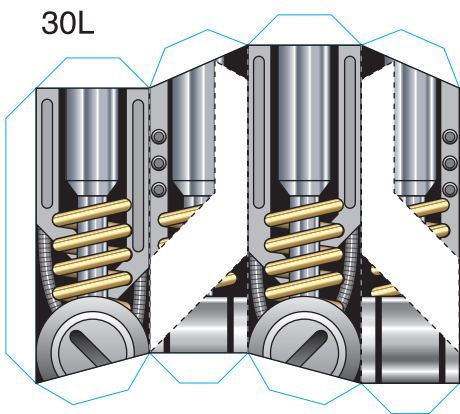
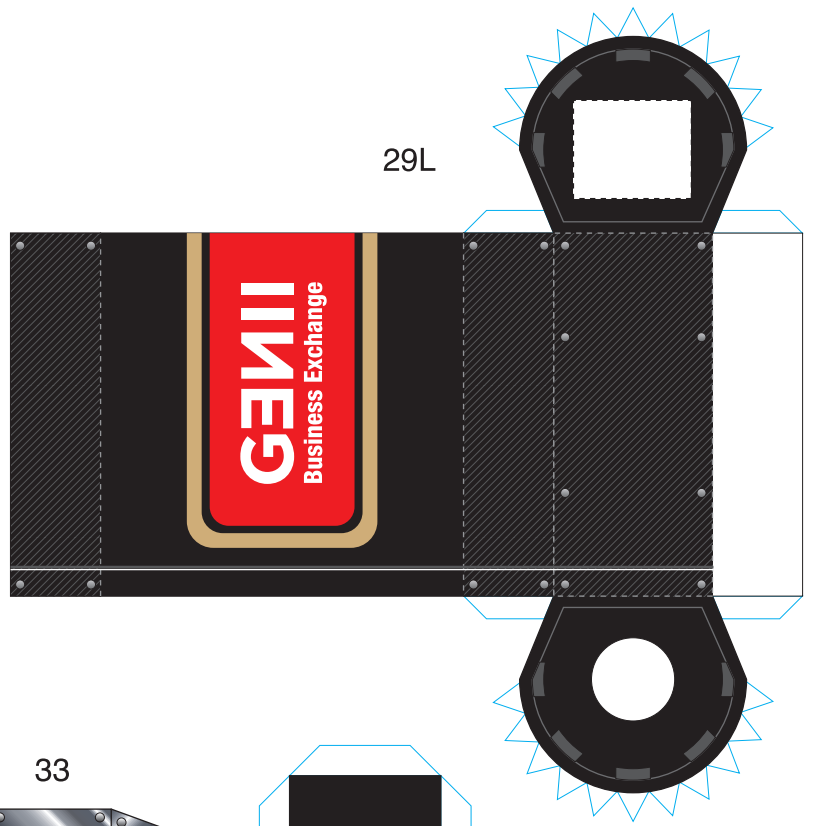
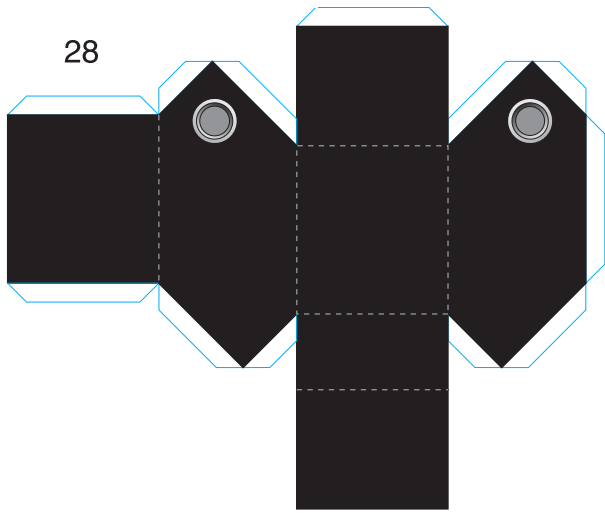
E21 robot - papercraft



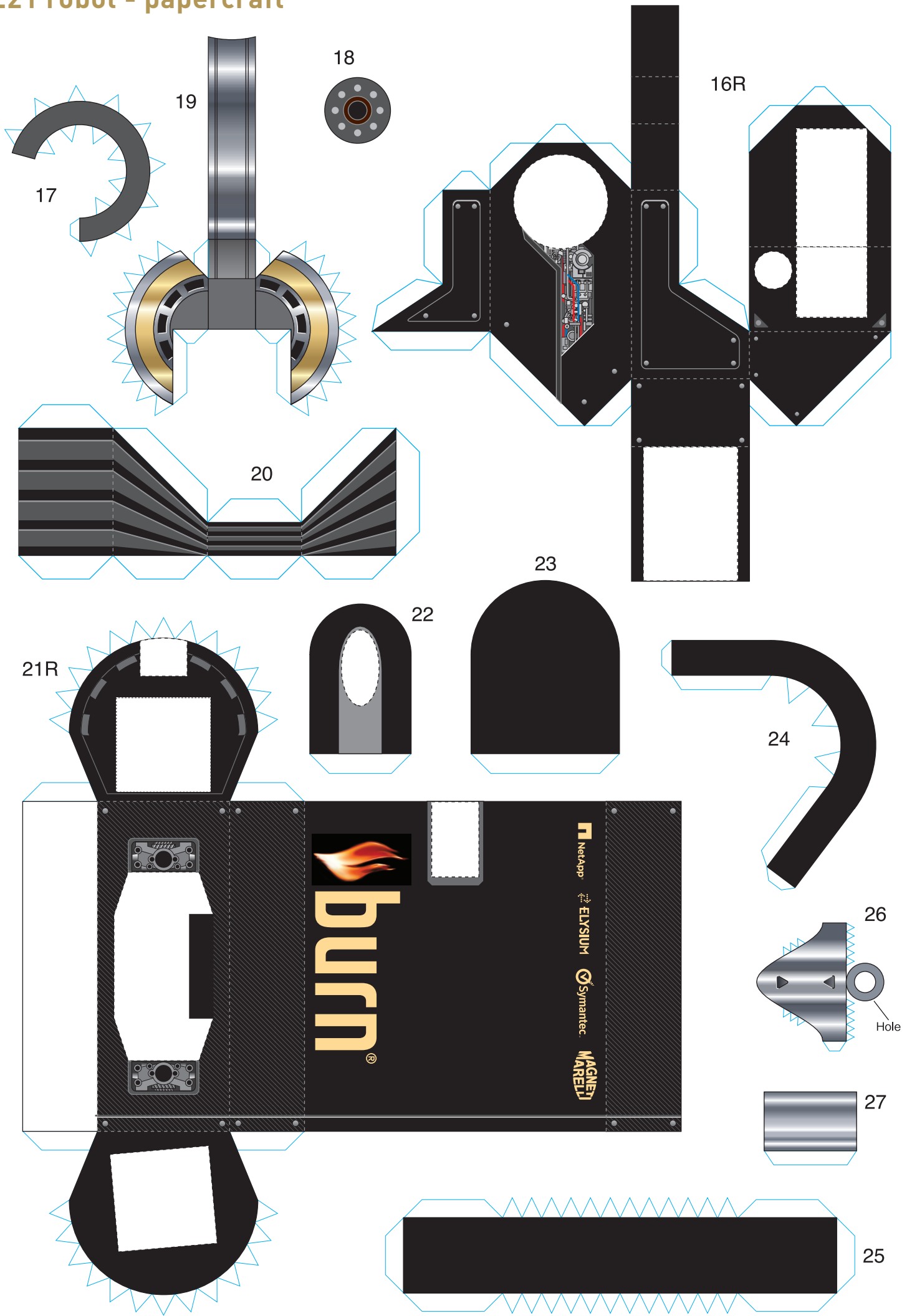
E21 robot - papercraft



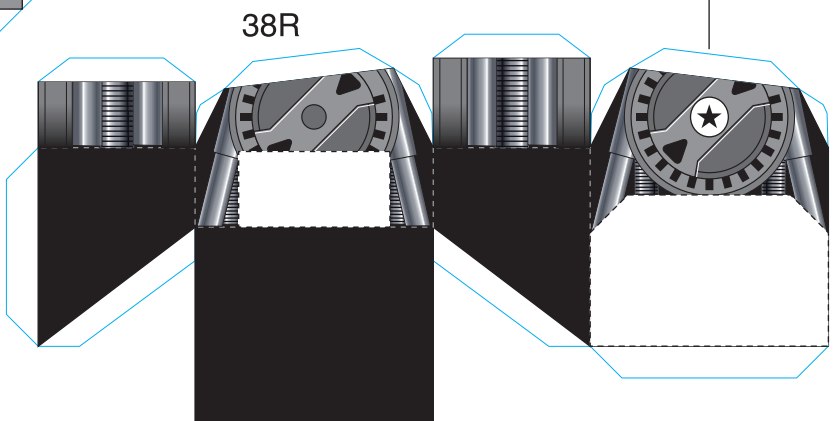
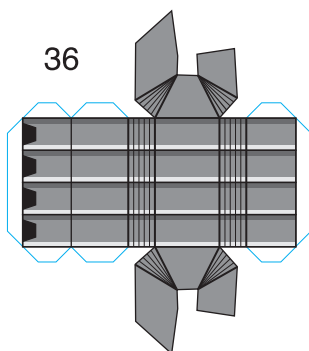
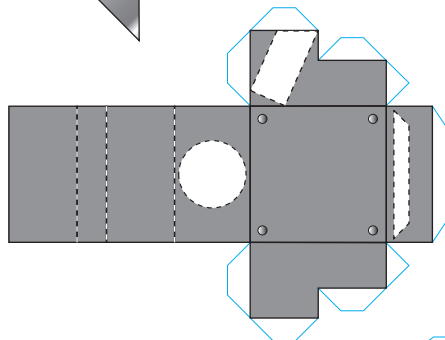
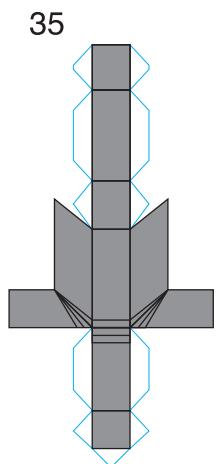
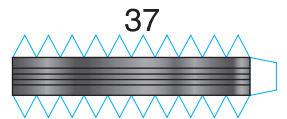
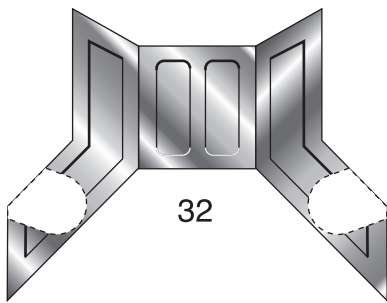
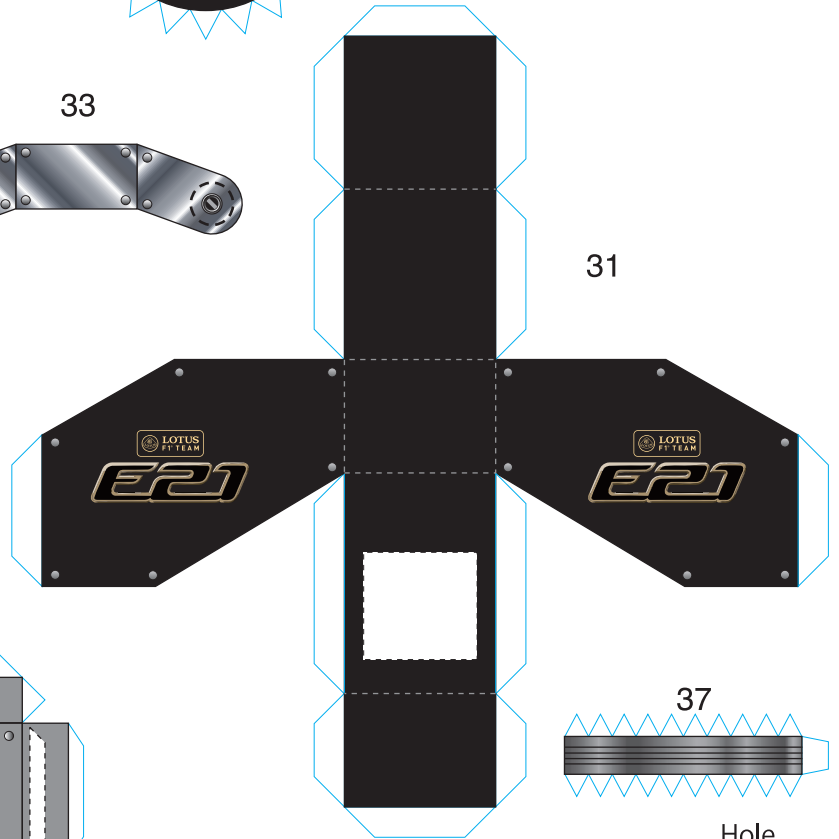
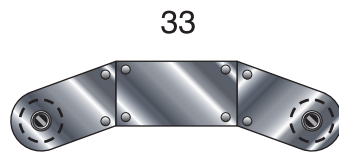
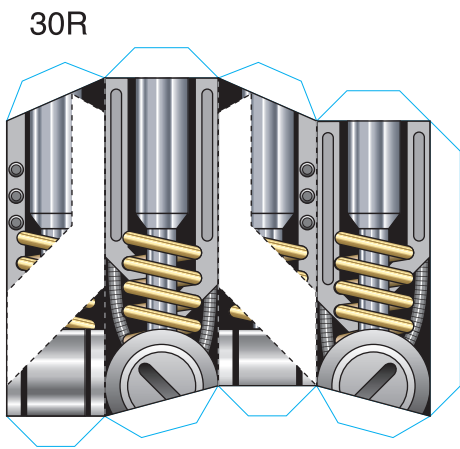
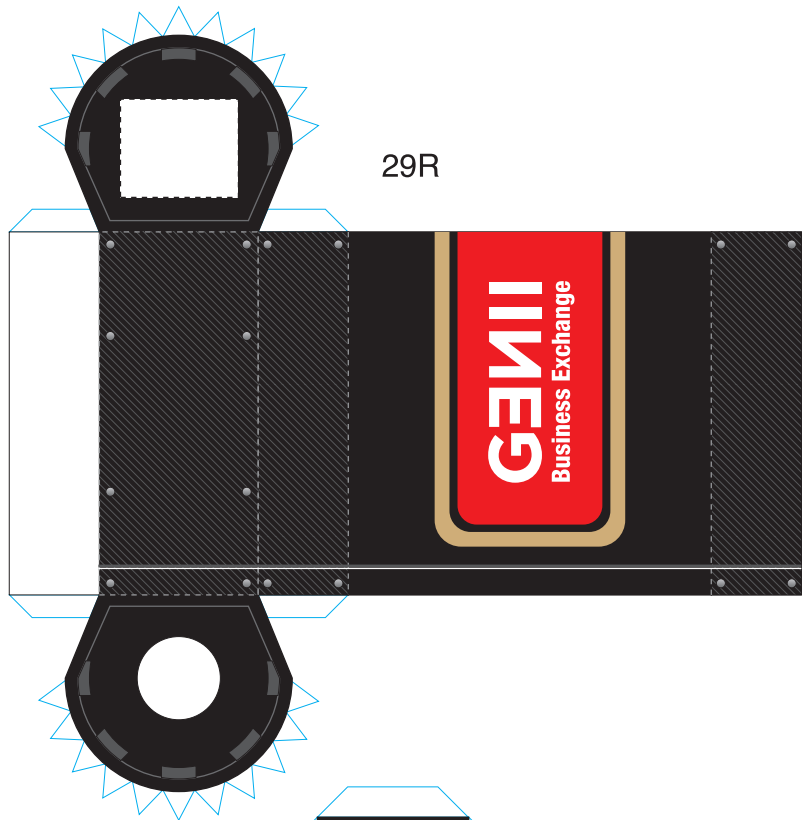
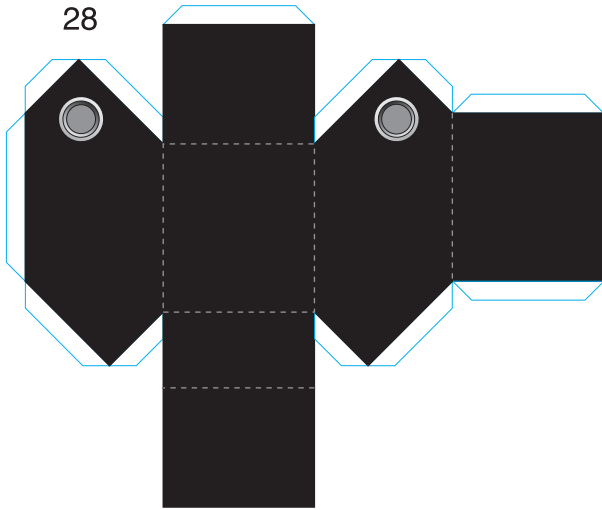
E21 robot - papercraft



E21 robot - papercraft

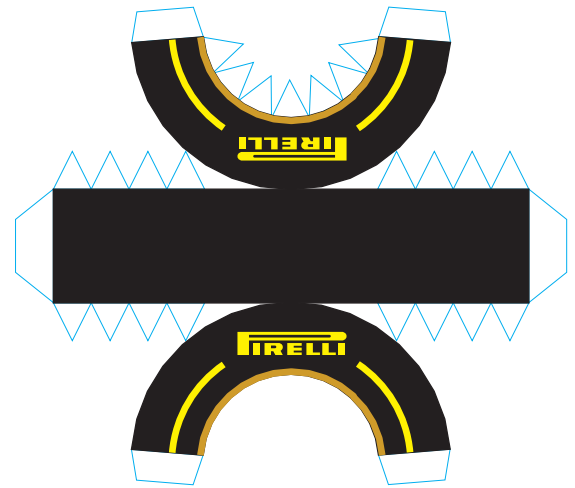
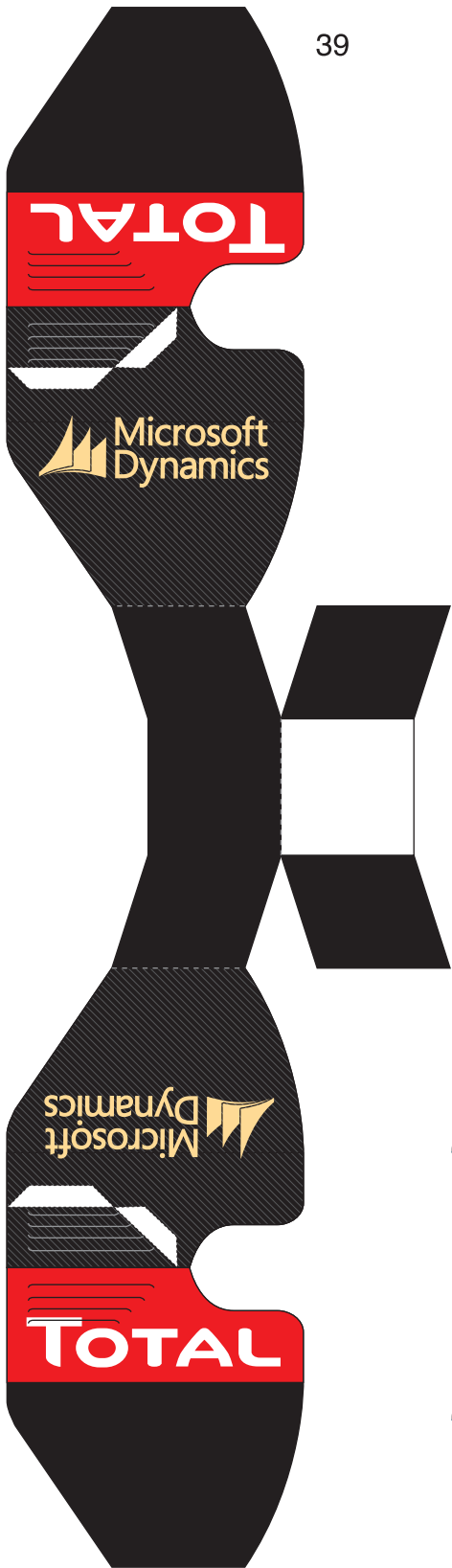


E21 robot - papercraft

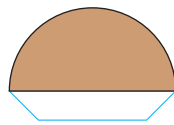
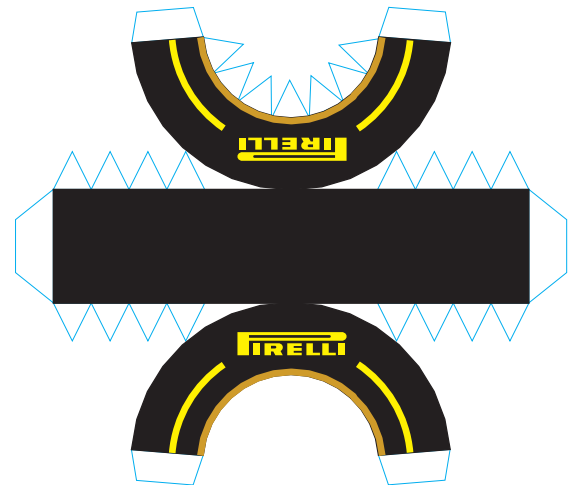


Hole
★Clip out.

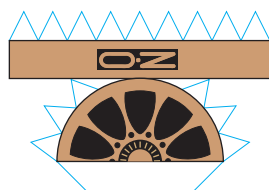
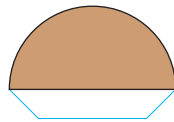
E21 robot - papercraft



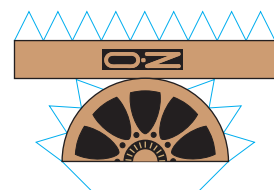
41



42

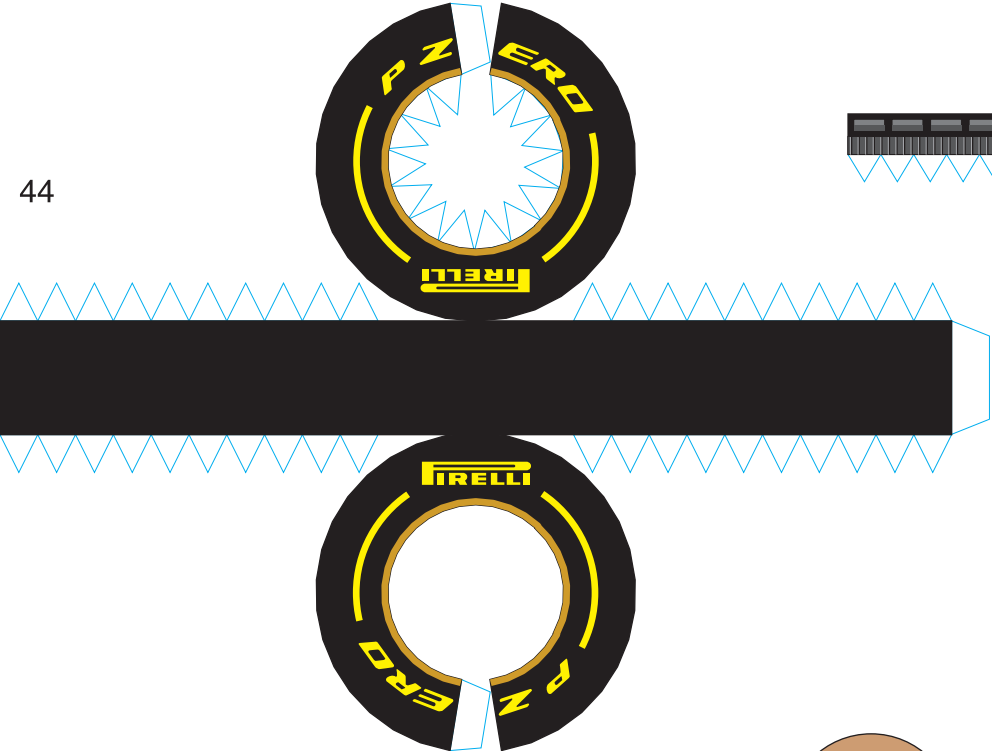


43

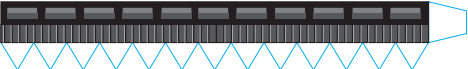


E21 robot - papercraft

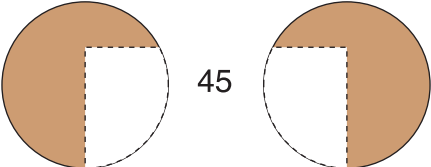
44



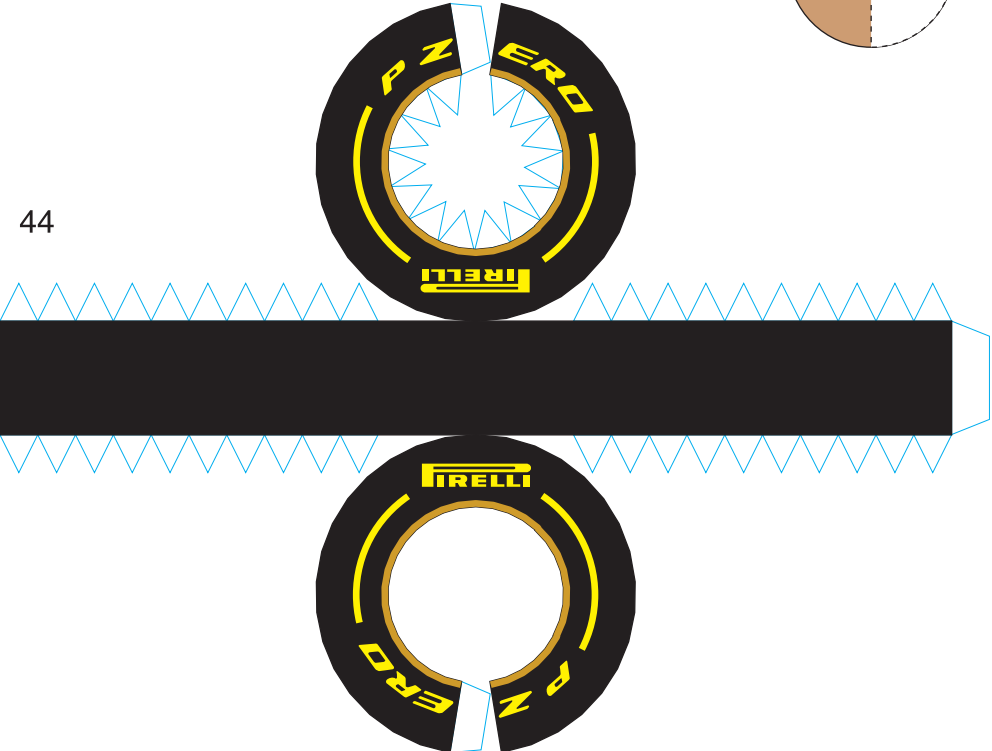
47



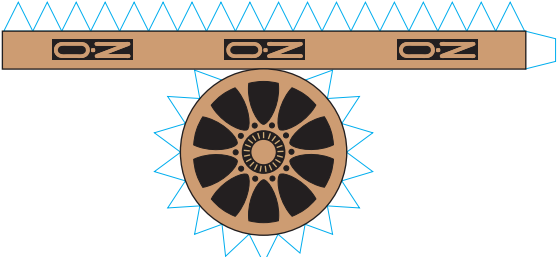
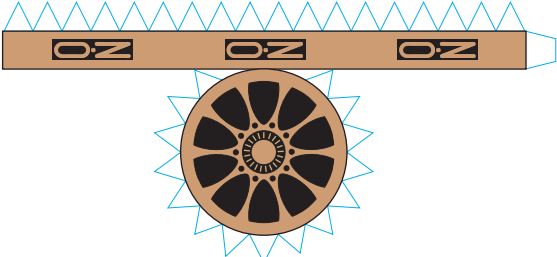
45



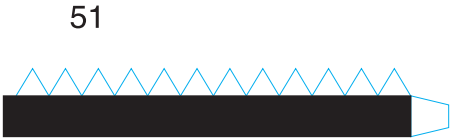
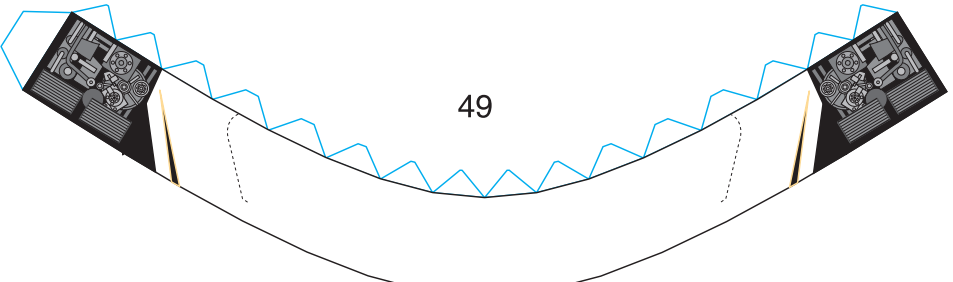
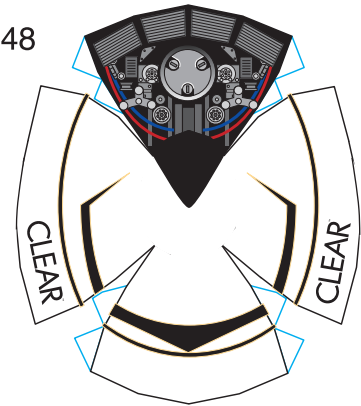
44



46



E21 robot - papercraft

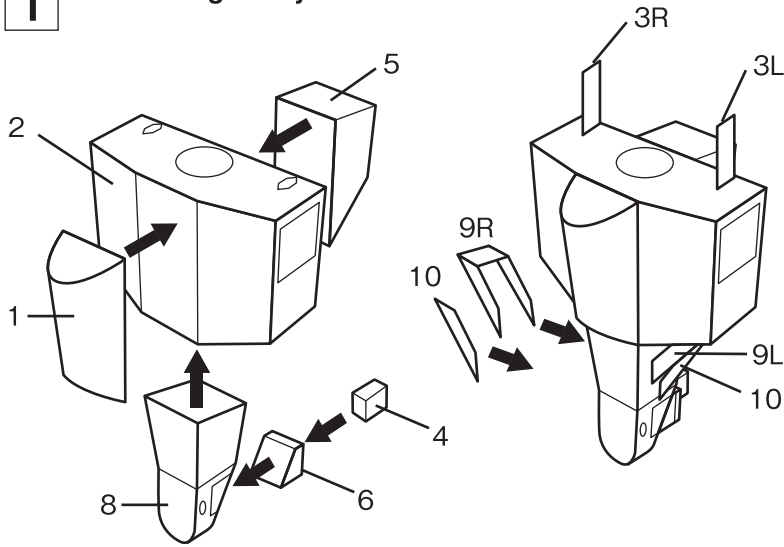


E21 Robot ASSEMBLY

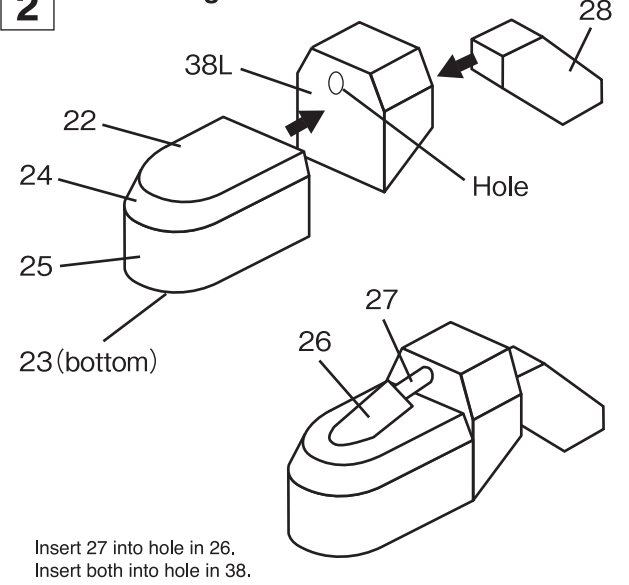
(CAUTION)

Please take care not to injure yourself when using an X-acto knife, scissors and other sharp or pointed tools.
We highly recommended PVA glue (White glue / Wood glue) for best results.

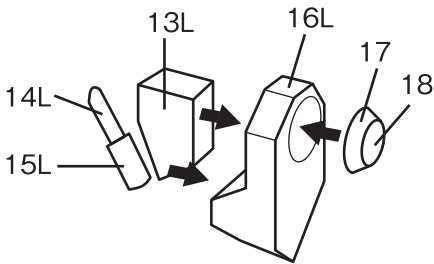
1 Assembling "body unit"



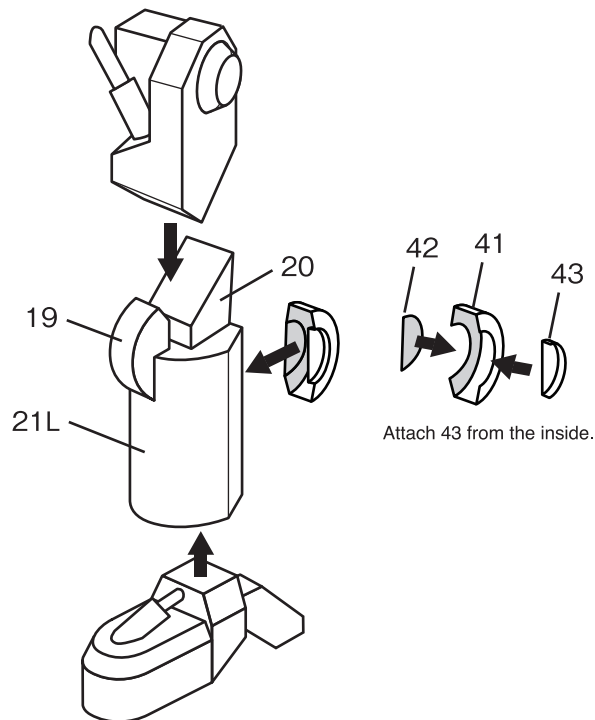
2 Assembling "foot unit"



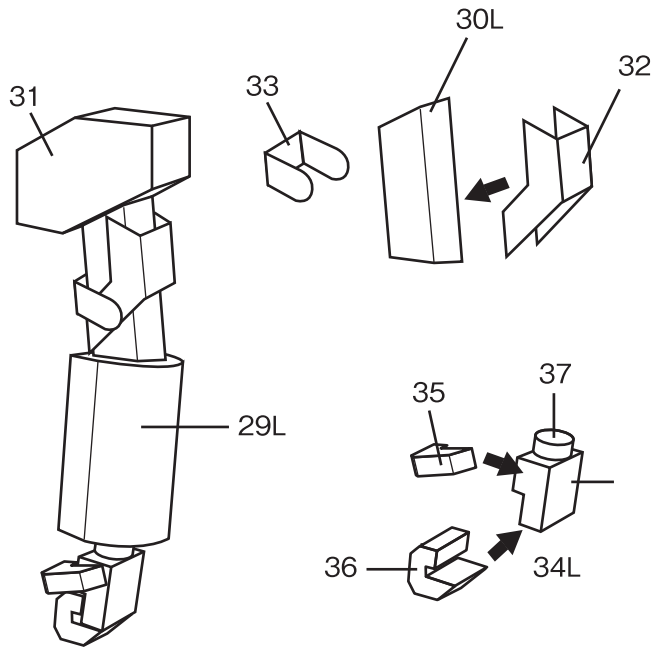
3 Assembling "leg unit"



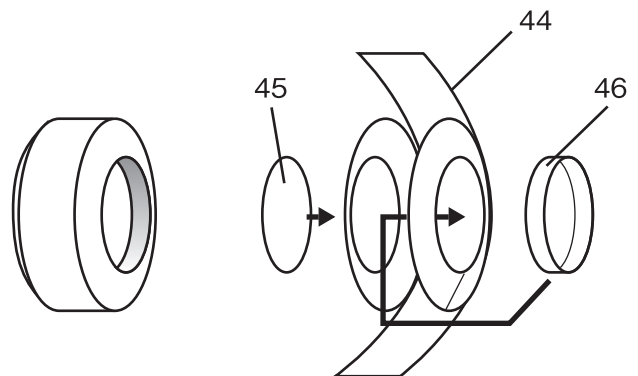
Insert 14 into hole in 15.



4 Assembling "arm unit"

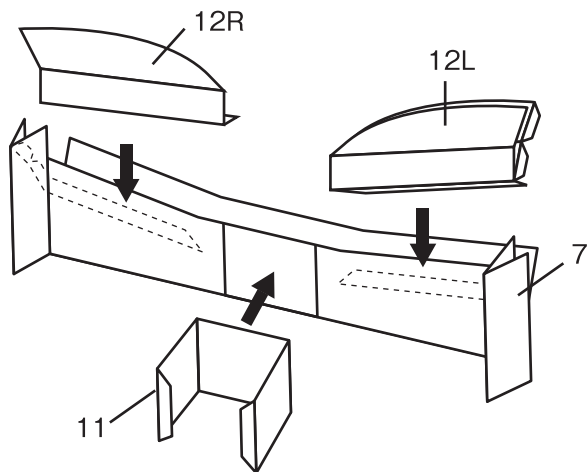


5 Assembling "tyre unit"

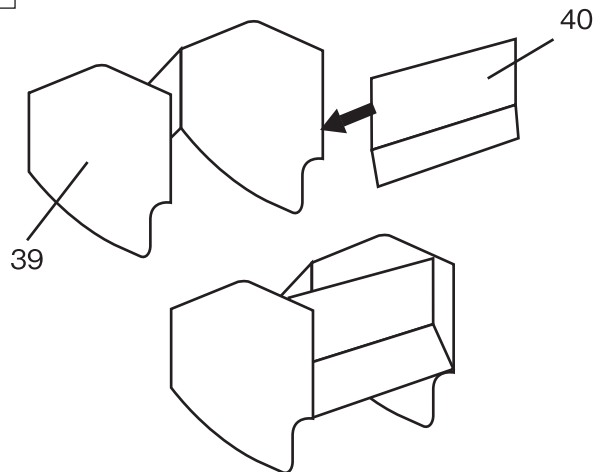


E21 Robot ASSEMBLY

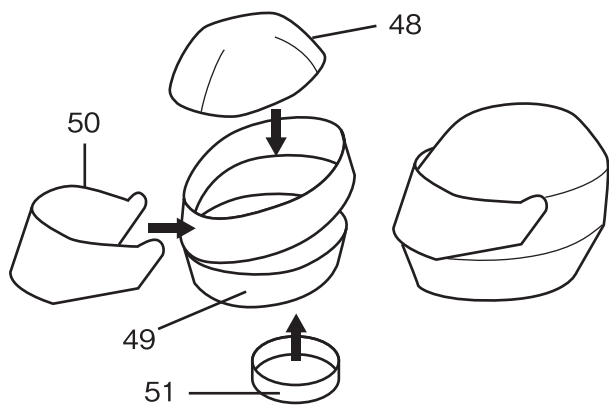
6 Assembling "front wing unit"



7 Assembling "Rear wing unit"



8 Assembling "head unit"



9 Assembling "head unit" Assembling the remaining parts

